

CelloEye-24G-5S

Manual



Introduction:

The CelloEye-24G-5S is a small size RF (radio frequency) detector capable of detecting a wide range of devices which are using RF for communication and other operations. Some examples are cell phones, cell towers, Wi-Fi routers, Bluetooth devices, wireless phones, smart meters, wireless cameras and bugs, microwave ovens and more.

Operation:

1. In order to turn the detector on, press the button for 2 seconds, the middle LED will blink twice and the detector will enter LEDs indicator mode. Once an RF source is detected, the LEDs will turn on according to the RF intensity detected. Green LEDs represents lower intensity than Yellow and Red LEDs.
2. Once the detector is turned on, click the button shortly to switch between LED only and LED with sound modes. When entering sound mode, the middle LED will blink along with a short beep sound.
3. In order to turn the detector off, click the button for 10 seconds. The middle LED will blink once to indicate the unit is now off.

* If the detector is left in ON mode, with or without sound, it will give alerts for an average time of 5 years (see more information below).

Important Notice:

This detector is intended for non-professionals to detect and learn about RF transmissions with a simple, intuitive, interface. The detector is intended as a visual guide, and not to indicate safe or unsafe levels.

While this detector is intended for detecting Radio Frequencies above 50 MHz, it can also detect low frequency electric fields that are above 1,000 V/m. There is no way to distinguish between the two using this detector.

Package content:

- ❖ 1 x CelloEye-24G-5S detector.
- ❖ 1 x CR2032 battery (already installed inside).
- ❖ User manual.

Applications:

- ❖ Scan the environment for RF transmitters. Detect RF from cell towers, smart meters, WiFi, Bluetooth and other various wireless/cordless transmitters.
- ❖ Spy camera, wireless bug finder.
- ❖ Capture smart meters transmission behavior.
- ❖ Figure out if you are being exposed to wireless radiation or not (and identify wireless “hot spots”).
- ❖ Help you double check if your phone is really on Airplane mode or not.
- ❖ Test different devices to see if they still emit EMFs.
- ❖ Science projects, learn which devices use RF for transmission.

Specs:

- ❖ Frequency range: 0.05 – 24 GHz.
- ❖ Sensitivity: down to 0.1 mW/m².
- ❖ Uses 1 x Cr2032 battery.
- ❖ Operation typically 5 years* on a single battery.
- ❖ Dimensions: 56 x 39 x 12mm.
- ❖ Net weight: 18g.

*When the light/sound is on an average 10 minutes per day.

Q&A:

Question: No light is showing on the device, what could be the reason?

Answer: 1. Make sure the battery is in good condition and inserted in the right polarity.

2. Make sure the detector is turned on.

3. Make sure there's some transmitter nearby, for example, hold the detector close to a Wi-Fi router.

Question: Why there is no sound?

Answer: First make sure there is a light notification. If there is no light notification, look at the question above to solve that first. If there is a light notification, press the button shortly, the LED should blink 3 times and after that there should be sound.

Question: Why do I get different results when holding the device at different directions?

Answer: RF transmissions are both usually directional, reflective and also sensitive to different types of blocking. It is possible that at different holding angles you will receive different results.

Question: Is there a certain recommended way to hold the detector?

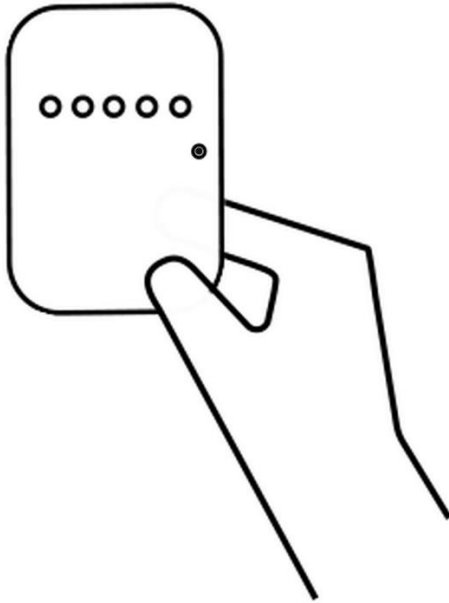
: The short answer is yes. The sensor is located at the upper half of the detector and some objects, including your hands if placed between the transmitter and the sensor can interfere (attenuate) the signal level that reaches it. See illustration image on the recommended way to hold the detector for maximum sensitivity.

Maintenance:

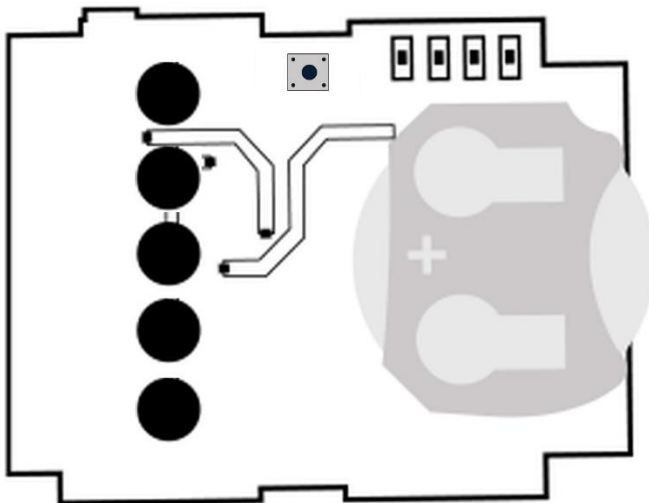
Always keep the device away from excessive heat or humidity.

Note: Please remember to follow local ordinances regarding disposal of electronic equipment.

How to hold the detector:



How to insert the battery (important to notice the battery polarity):



The plus side of the battery should face upwards.

Warranty:

The CelloEye-24G-5S comes with two years limited warranty.

For more information, or to contact us, please email to:

support@envirosens.com